



Certification Procedures for Small Producers' Organizations

Small Producers' Symbol

Version 5. 31-Jul-2016
Edition 1. 10-Mar-2017
Translation 10-Mar-2017



I. INTRODUCTION

1. The official language for all documents associated with the Small Producers' Symbol is Spanish. In the case of any doubt arising from a translated version, the Spanish document shall be used as the only valid version

2. This document cancels and replaces:

Certification Procedures for Small Producers' Organizations
Small Producers' Symbol

Version 5. 15-Abr-2016

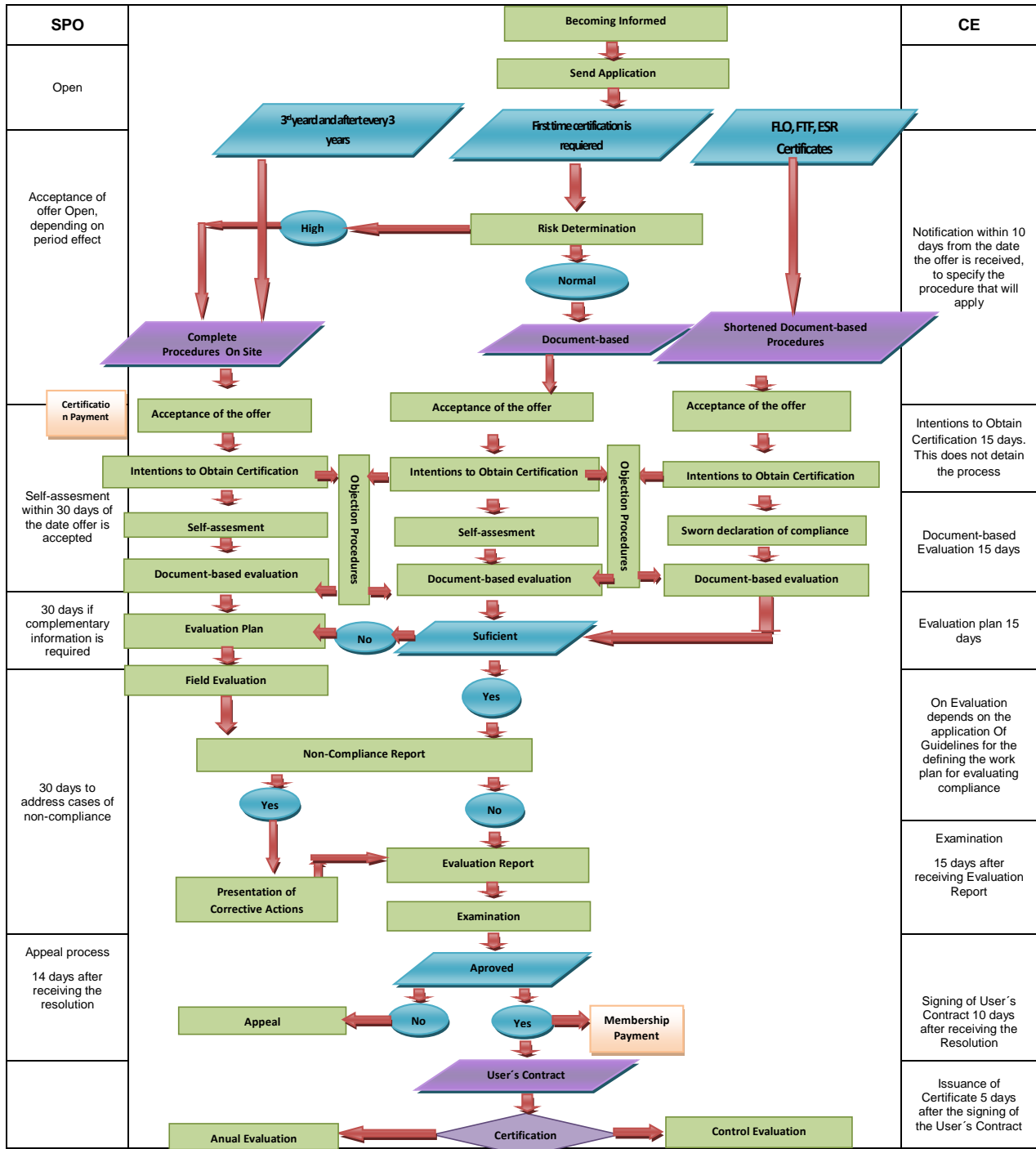
Edition 1. 10-Jun-2016

Translation 10-Jun-2016

3. ISO 19011: 2002 Guidelines for quality and/or environmental management systems auditing has been used as the basis for developing these procedures.
4. These procedures fulfill the ISO/17065 Standard "Conformity assessment - Requirements for bodies certifying products, processes and services".
5. If you would like to see the changes between this new edition and the previous one, please consult the chart listing the changes, presented at the end of this document.



II. DIAGRAM OF PROCESS





1. OBJECTIVE

Establish the procedures that Certification Entities must follow when granting Certification to Small Producers' Organizations that comply with the General Standard of the Small Producers' Symbol.

2. SCOPE

2.1 These procedures apply to all Small Producers' Organizations that wish to apply for Certification based on the General Standard of the Small Producers' Symbol.

2.2 These procedures may be applied in combination with other certification procedures of other certification programs.

2.3 It is important to become familiar with all the procedures, in order to understand the different parts of this certification process and the types of evaluations described in this document, to then be able to apply each of the separate components correctly.

3. REFERENCES

To apply these procedures, it is necessary to consult the valid versions of the following documents:

- 3.1** General Standard of the Small Producers' Symbol
- 3.2** Code of Conduct of the Small Producers' Symbol
- 3.3** Guidelines for Defining Work Plan for an Evaluation of Compliance
- 3.4** Dissents Procedures
- 3.5** Risk Determination Procedures
- 3.6** Examination Procedures
- 3.7** Regulations on Costs
- 3.8** Procedures for Issuance, Modification and Extension of Certificates and Registrations of Conformity
- 3.9** General SPP Application Guidelines
- 3.10** List of Requirements for the Evaluation

4. DEFINITIONS

4.1 Corrective Action: An action presented in the case of Non-Compliance with Criteria in the General Standard of the Small Producers' Symbol.

4.2 Cancellation: Total annulment of the validity of an SPP certificate or registration of an organization or company, as a result of a certain failure to comply with the SPP Regulatory Framework. The status obtained in this case is "Cancelled."

4.3 Examination Committee of the Certification Entity: The Examination Committee or staff of SPP GLOBAL or any other Certification Entity recognized by SPP GLOBAL.

4.4 Final Buyer (BUY): A company that buys products certified with the Small Producers' Symbol to place them on the final consumer market under its own name or trademark, and that complies with the respective criteria in the applicable Standards of the Small Producer's Symbol.

4.5 Collective Trading Companies owned by Small Producers' Organizations (C-SPO): Companies that are majority-owned by two or more Small Producers' Organizations certified with the Small Producers' Symbol, and that trade products certified with the Small Producers' Symbol to place them on the market.



- 4.6 **Criteria:** The criteria defined in the General Standard of the Small Producers' Symbol.
- 4.7 **Critical Criterion:** The criteria for these standards that are qualified as critical are mandatory and will be evaluated in all cases, including as part of desktop assessments. Non-compliance with these criteria will directly impact Certification and Registration results.
- 4.8 **Minimum Criteria:** Minimum criteria are mandatory, but will only be evaluated through evaluations that include a field visit. Non-compliance with these criteria will directly impact Certification and Registration results..
- 4.9 **Continuous Improvement Criteria:** Criteria that are evaluated according to the range of possibilities for compliance within a specific context. They are only evaluated by means of a field evaluation. Unjustified Non-compliance with these criteria will impact Certification and Registration results.
- 4.10 **Deactivation:** Temporally annulment of the validity of a certificate or registration requested voluntarily by the organization or company. The status obtained in this case is "Inactive."
- 4.11 **Day:** Calendar Day
- 4.12 **Evaluation:** A systematic, independent and documented process used to obtain and analyze facts in an objective manner, in order to determine the level of compliance with criteria.
- 4.13 **Control Evaluation:** A field evaluation that is randomly carried out on a yearly basis on 10% of those certified or registered through the Quick Procedure and on 5% of those certified or registered through the Complete Procedure.
- 4.14 **Monitoring Evaluation:** A programmed evaluation that is conducted exclusively to evaluate the Corrective Actions requested in the Resolution.
- 4.15 **On-Site Evaluation:** An on-site evaluation at the location(s) where activities of the organization or company to be evaluated take place, to verify compliance with the Standard.
- 4.16 **Document-based Evaluation:** An evaluation based exclusively on documents that verify compliance with the Standard, to be presented or sent by the applicant to the evaluator.
- 4.17 **Annual Evaluation:** An annual evaluation that is conducted to verify if the conditions under which Certification or Registration was granted, have been maintained.
- 4.18 **Evaluatee:** Applicant subject to an evaluation in order to obtain Certification or Registration.
- 4.19 **Evaluator:** A person assigned by SPP GLOBAL or the Certification Entity who is responsible for the process of evaluating the applicant.
- 4.20 **Objective Evidence:** Records, declarations of facts, or any other information that can be verified and reproduced.
- 4.21 **SPP GLOBAL:** Foundation of Organized Small Producers, a Civil Association (Fundación de Pequeños Productores Organizados, Asociación Civil).
- 4.22 **Evaluation Findings:** Results of the evaluation of objective evidence, showing Compliance or Non-compliance with criteria.
- 4.23 **Intermediaries:** Trading companies that buy and sell Small Producers' Symbol products, and do not place these products on the final consumer market under their own name or trademark.



- 4.24 **Maquila Companies:** Service providers that intervene in the trading or processing of products, but do not buy or sell these products.
- 4.25 **SPP Regulatory Framework:** The set of standards, procedures, regulations, guidelines, policies, codes and forms that regulate the program of certification, registration, use and authorization of the Small Producers' Symbol. The Declaration of Principles and Values of the Small Producers' Symbol expresses the basic philosophy of the Regulatory Framework, but is not part of it.
- 4.26 **Offer:** Proposal for costs and characteristics of a service.
- 4.27 **Certification Entity (CE):** CE authorized by SPP GLOBAL to operate the certification or registration program for the Small Producers' Symbol. In exceptional cases in which authorized CEs are unable to provide the service requested in a timely manner, SPP GLOBAL may serve as a CE.
- 4.28 **Small Producers' Organization (SPO):** A Small Producers' Organization that meets the criteria for Small Producers' Organizations in the General Standard of the Small Producers' Symbol. When a trading company is part of the structure of a single Small Producers' Organization that is certified with the Small Producers' Symbol, it is considered to be part of the Small Producers' Organization.
- 4.29 **First-Level Small Producers' Organization:** SPO whose members are producers and individuals.
- 4.30 **Second-Level Small Producers' Organization:** SPO whose members are first-level SPOs (and occasionally members of a first-level SPO and/or individuals).
- 4.31 **Third-Level Small Producers' Organization:** SPO whose members are second-level SPOs (and occasionally members of a first-level SPO and/or individuals).
- 4.32 **Fourth-Level Small Producers' Organization:** SPO whose members are third-level SPOs (and occasionally members of a second-level or first-level SPO and/or individual members).
- 4.33 **Observation related to the Continuous Improvement Criteria:** An observation carried out by the Certification Entity, related to compliance with the Continuous Improvement Criteria specified in the General Standard of the Small Producers' Symbol.
- 4.34 **Document-based Procedure:** Consists exclusively of a Document-based Evaluation of compliance with the applicable Critical Criteria specified in the General Standard, as part of a Certification or Registration process.
- 4.35 **Shortened Document-based Procedure:** Consists of acknowledging a SPO that already has a Fair Trade-related certificate, and thus an abbreviated Document-based Evaluation will be applied.
- 4.36 **Complete Procedure:** Includes a Document-based Evaluation and a Field Evaluation of compliance with all applicable criteria specified in the General Standard, as part of a Certification or Registration process.
- 4.37 **Applicant:** Those applying for Certification or Registration with the Small Producers' Symbol.
- 4.38 **Suspension:** Temporary annulment of the validity of a certificate or registration of an organization or company, as a result of certain failure to comply with the SPP Regulatory Framework. The status obtained in this case is "Suspended".



Other important definitions and abbreviations are reflected in the various documents mentioned.

5. GENERAL PROCEDURES

5.1 CERTIFICATION OPTIONS AND TYPES OF EVALUATION

5.1.1 Following are the current Certification Procedures:

A. Document-based Procedure:

1. **Normal:** Consists exclusively of a Document-based Evaluation of compliance by Small Producers' Organizations applying for certification with the applicable Critical Criteria specified in the General Standard.
2. **Shortened:** Consists of a shortened Document-based evaluation of an SPO that already has a fair trade certificate, acknowledged by SPP GLOBAL for this purpose. The Shortened Document-based Procedure only can be applied for the initial certification.

B. Complete On Site Procedure: Consists of an evaluation on site for all applicable criteria (critical, minimum and continuous improvement) of the General Standard by Small Producers' Organizations to be certified.

5.1.2 The Certification Procedures for Small Producers' Organizations will be conducted in accordance with the following certification scheme:

- | | |
|---------|---|
| Year 0 | Document-based Procedure (Normal or Shortened): |
| Year 1: | Document-based Procedure (Normal) |
| Year 2 | Complete On-site Procedure |
| Year 3: | Document-based Procedure (Normal) |
| Year 4: | Document-based Procedure (Normal) |
| Year 5: | Complete On-site Procedure |
| Year 6: | Document-based Procedure (Normal) |
| Year 7: | Document-based Procedure (Normal) |

5.1.3 If the applicant prefers, the Complete On-site Procedure may be applied in any case, instead of the Document-based Procedure

5.1.4 Even if there are few or no SPP transactions, Complete On-site Procedure should be carried out within three years of being certified and then every three years thereafter.

5.1.5 When transactions are above US \$1,500,000, a Complete On-site Procedure will be conducted every two years instead of every three years.



5.1.6	Non-conformity notes, changes in legal status and other drastic changes in an organization's characteristics may cause the CE to request control evaluations (with an On-site evaluation) in the years corresponding to a Document-based Evaluation, with prior authorization from SPP Global.
	<i>Note: After the application of the Complete Procedure On Site, the Document-based Procedure is applied two continuous years, as established in 5.1.2</i>
5.1.7	<p>In any case, if the Document-based Procedure does not provide sufficient information to establish compliance with the Critical Criteria specified in the General Standard, it must be complemented with an Evaluation on site.</p> <p>In this case the Certification Entity will make a proposal for costs based only on expenses incurred in the complementary evaluation on site conducted for verifying the missing information.</p>
5.2 APPLICATION FOR CERTIFICATION	
5.2.1	<p>Any Small Producers' Organization interested in certification may contact the Certification Entity or request an information packet online or via email, to include the following:</p> <ul style="list-style-type: none">a) Small Producers' Symbol Handbookb) General Standard of the Small Producers' Symbolc) Declaration of Principles and Values of the Small Producers' Symbold) Code of Conduct of the Small Producers' Symbole) Application Form for Certification and Use of the Small Producers' Symbol
5.2.2	The Certification Entity will clarify any doubts the applicant might have.
5.2.3	<p>An authorized representative of the applicant must send the application form for certification, filled out properly and signed, to the Certification Entity, making use of the SPP digital system¹ 'D-SPP'.</p> <p>The following cases may occur:</p> <ul style="list-style-type: none">a) The applicant selects a Certification Entity, as long as it is one of those authorized by SPP GLOBAL.b) The applicant has not selected a Certification Entity, and therefore SPP GLOBAL proposes an authorized Certification Entity to the applicant or sends the application to all the Certification Entities and asks them to make an offer and then the applicant can select one of them.c) In the cases in which none of the authorized CEs is able to provide the service requested, SPP GLOBAL will act as the CE.
5.2.4	The Certification Entity (CE) will receive the Application for Certification, check if it is filled out correctly and signed; and will then approve or reject it. If an application is approved, the CE must notify SPP GLOBAL immediately.

¹ Beginning on September 1, 2016, all Small Producers' Organizations requesting SPP certification for the first time or those renewing their certification must send their application through the D-SPP digital system. In addition, they must carry out the actions indicated in the D-SPP Instructions for Small Producers' Organizations.



5.2.5	If the application has not been filled out correctly, the CE will inform the applicant so that a corrected or completed version of the application may be submitted.
5.2.6	After the applicant completes the application, the CE should indicate all the requirements for the evaluation, depending on the type of stakeholder and the type of procedure to be applied. NOTE: A List of Requirements for the evaluation is included as an Annex to these Procedures
5.2.7	The CE should send its offer to the applicant, with a copy to SPP GLOBAL. The offer must be prepared as indicated in 5.3 of this Section.
5.2.8	After approved, the CE should immediately send the application to SPP GLOBAL.
5.2.9	When an application is sent to SPP GLOBAL to be channeled to the CEs, SPP GLOBAL should wait until the applicant has selected the CE of its preference and until the CE sends the approved application to SPP GLOBAL.
5.2.10	SPP GLOBAL receives the application and assigns an SPP Identification Code. (#SPP) which SPP GLOBAL shall report immediately to the CE in order to register the code the applicant's record, as well as in any certificate issued by the CE, regardless of any additional number or key the CE assigns for its own purposes. <i>Notes:</i> <ul style="list-style-type: none">a. <i>Small Producers' Organizations must, where feasible, indicate the SPP Identification Code (#SPP) in all the documentation generated for business transactions of the Small Producers Symbol's certified products.</i>b. <i>In the case that an organization or company interrupts its Certification/Registration for a certain period and then becomes certified again, the assigned #SPP will remain the same as the one assigned the first time.</i>
5.3 PREPARATION OF OFFER	
5.3.1	The Certification Entity applies the "Guidelines for defining the work days for evaluating compliance" and the "Regulations on Costs" in order to thus determine the Offer for the Certification Process.
5.3.2	The Offer for the Certification Process is sent to the Small Producers' Organization for acceptance.
5.4 OBJECTION PROCESS	
<p>After all the necessary information has been presented properly together with the Application and accepted by the Certification Entity, and after the offer has been accepted by the Small Producers' Organization, the CE sends the application to SPP GLOBAL and the Objection process starts for which 21 days are established. The certification process is stopped until SPP GLOBAL informs to the CE the results of the revision.</p> <p>During the first 14 days of the 21 days period, the SPP GLOBAL's Certification and Quality area, conduct a revision of the SPO applicant's background using the following methodology:</p> <ol style="list-style-type: none">1. Publicize the applicant's intention to become certified in its website and notify this intention to all certified, registered and authorized members and to related producer networks. A period of 15 days will begin during which time any objections to the Applicant's Certification may be-presented. The objections presented to SPP GLOBAL	



must be substantiated with concrete information that can be verified related to non-compliances with the General Standard and/or Code of Conduct of the Small Producers' Symbol.

2. Get in touch with the SPP stakeholders and coordination structures of the country involved.
3. Review the origin and background of the applicant, using public information and eventually through direct interviews.
4. Review the objections presented by third parties to verify that they comply with the requirements.
5. In case of detecting substantiated elements of non-compliance with the General Standard or Code of Conduct of the Small Producers' Symbol, the SPP GLOBAL's Certification and Quality area formulates a "Notice of Objection" and send to the SPP GLOBAL's Dissents Committee.
6. In case of absence of elements of non-compliance with the Standard and / or the Code of Conduct of the Small Producers' Symbol, the SPP GLOBAL's Certification and Quality area notifies the CE at the latest on the expiry of the 14 days period that they can start with the certification and or registration process.
7. In case of existing an objection, the SPP GLOBAL's Dissents Committee must analyze and reply in positive or negative sense, in a period of not more than 5 days in, or can ask to the SPP GLOBAL's Certification and Quality area to proceed with a deeper research in a specific period of time.
8. If in the period of the five days, the Dissents Committee decides to come resolution in a positive or negative sense, in a period of maximum two days after the DC's resolution the SPP GLOBAL's Certification and Quality department notifies to the CE if they can continue with the certification process, or not,. A negative resolution implies that the certification process will not proceed, which is informed to the corresponding CE.
9. In case the DC (Dissents Committee) considers a deeper research on behalf the SPP GLOBAL's operations team is necessary, the CE will be informed that they must continue waiting for the results of the research in a certain period.
10. If the organization applicant does not agree with the resolution of the Dissents Committee, they can ask a revision for the case, providing the necessary support.

5.5 SPECIFIC PROCEDURES

5.5.1 "NORMAL" DOCUMENT-BASED PROCEDURE

5.5.1.1 The Certification Entity will ask the Applicant to send in its Evaluation Form. The Evaluation Form is based on the General Standard of the Small Producers' Symbol, and its purpose is for the Applicant to conduct a self-assessment. The Applicant will be informed that it should use the spaces labeled with the heading: "To be completed by the applicant," and that it must also attach:

1. A list of members presented as follows:
 - a) Name(s) of producer(s)
 - b) Name of locality
 - c) Size of production unit, for each product to be certified
 - d) Annual production, for each product to be included in Certification
 - e) Must be validated internally or externally.



	<ol style="list-style-type: none">2. Certificates (Organic, Fair Trade, Sustainable, etc.) that the Applicant has been awarded and that are currently in effect.3. Documents that support and confirm the data and responses indicated in the Evaluation Form, with regard to compliance with the Criteria in the General Standard, including:<ol style="list-style-type: none">a) Organization's Constitutionb) Minutes from the last two General Assemblies.c) Appointments of directors and legal representativesd) Internal regulations, when applicablee) Forms or documents that demonstrate the system for traceability from the producer to the organization's clientsf) List of subcontracted entities that intervene in the processing and trading of products, when applicable.4. Receipt for payment of the Offer
5.5.1.2	The applicant sends the Evaluation Form, correctly filled out and signed, with the requested attachments, as indicated in the instructions provided on the form
5.5.1.3	<p>The Certification Entity receives and reviews the Evaluation Form to verify that it has been correctly filled out and signed, in accordance with the instructions provided on the form, and that the required annexes have been included. It also verifies that confirmation of the corresponding payment is included.</p> <p>If a document is missing or the form is not filled out correctly, the Certification Entity will notify the Applicant that the process will not move forward until all the documents requested have been received.</p>
5.5.1.4	After it is confirmed that all documents have been received, the Certification Entity will assign an evaluator, taking care to assure that there is no conflict of interest with the Applicant.
5.5.1.5	The assigned evaluator will begin with the Document-based Evaluation of the information sent by the Applicant and any objections that may have been submitted.
5.5.1.6	<p>If the evaluator considers the information insufficient for establishing compliance with the Critical Criteria of the Standard, he/she may request complementary documentation (to be sent preferably by email) to support the Application and the Evaluation Form. Some examples of complementary documents that may be requested are listed below:</p> <ol style="list-style-type: none">1. A list of organizations or national and/or international networks in which the Small Producers' Organization is a member.2. Corrective measures of certifications, for example:<ol style="list-style-type: none">i. Fair Tradeii. Organic Productioniii. Sustainable Production3. Description of Internal Control System, if applicable:<ol style="list-style-type: none">i. Example of Technical Specifications4. Other documents that support compliance with the General Standard:<ol style="list-style-type: none">i. Most recent Annual Commercial Reportii. Valid General Working Planiii. List of specific projects



	<p>5. History of the Small Producers' Organization (the year it was founded, institutional objectives, primary achievements, products, and suppliers of maquila or trading services).</p>
5.5.1.7	<p>At the moment in which complementary documentation is requested, the Applicant will be informed that it will have 30 days to send it in, and if it fails to do so, the Application for Certification will be canceled, and it will be necessary to start the process again.</p>
5.5.1.8	<p>On the basis of the Evaluation Form and the complementary documentation provided by the Small Producers' Organization, the assigned evaluator will compile evidence of compliance through a desk review of these documents, recording it on the Evaluation Form, in the spaces labeled with the heading: "To be completed by the Certification Entity's evaluator."</p>
5.5.1.9	<p>Development of Findings:</p> <ul style="list-style-type: none">a) The evaluator must review all findings to determine which should be reported as Non-compliance, and at the same time avoid overlooking those findings that do establish Compliance. The evaluator must assure that all findings are documented in a clear, concise manner, and supported by objective evidence.b) All Compliance and Non-compliance must be referenced to the criteria, and the sources of information must be specified in the Evaluation Form.
5.5.1.10	<p>The Evaluator will prepare the Evaluation Report, completing the Evaluation Form, and proceeding with the following steps:</p> <ul style="list-style-type: none">a) If there is insufficient document-based support, the applicant should be notified of the need for a Field Evaluation for establishing compliance with the General Standard. In such case, the evaluator must present the reasons for this need and present a Field Evaluation Plan, with the corresponding estimated costs. In this case, the Certification Entity will make a proposal on costs based exclusively on the costs involved in the complementary field visit conducted in order to corroborate the missing information, and following the guidelines for defining the days in the field evaluation.b) Review and corroborate the findings and any other relevant information that will be reflected in the Evaluation Report.c) Document cases of Compliance and Non-compliance and reference them in the Evaluation Form.d) Skip to point 5.7 of these procedures.
5.5.1.11	<p>At the beginning of this document, there is a diagram of the process, with timelines for the various steps in the process that may be summarized as follows:</p> <ul style="list-style-type: none">1. Self-evaluation completed: 30 calendar days2. Complementary information sent: 30 calendar days3. Non-conformities addressed: 30 calendar days <ul style="list-style-type: none">a) If a Small Producers' Organization that is applying for certification for the first time does not comply with the total of the maximum timelines for each step in the certification process, the process will be considered to be discontinued and the applicant will have to send a new application to the CE (Certification Entity). Each step has a timeline of 30 days (total = 90 days).b) The time granted to the CE for conducting the evaluation for each step is a total of 15 calendar days, independent of the time that the evaluatee has for each step in the



	process. The time periods granted to the CE will never be considered within the timelines for SPPs.
5.5.2	“SHORTENED” DOCUMENT-BASED PROCEDURE
5.5.2.1	The CE requires the Applicant to send the following information: <ul style="list-style-type: none">a) The certificate it already has, related to Fair Trade and currently in effect, recognized by SPP GLOBAL for this purpose. Until now the recognized certificates are²:<ul style="list-style-type: none">i. Fair Trade International (FLO)ii. Fair Trade Federation (FTF)iii. Equality, Solidarity and Responsibility (ESR- ECOCERT)b) Sworn declaration of the interested party’s compliance with the organizational Critical Criteria in the General Standard (Sections 4.1 and 4.2).c) Its Members’ List with the following characteristics:<ul style="list-style-type: none">i. Names of producersii. Name of localityiii. Size of production unit, by product to be certifiediv. Annual production, by product to be included in certificationv. Must be validated internally and externally.d) Proof of payment of offer
5.5.2.2	After it is confirmed that all documents have been received, the CE will assign an evaluator, assuring there is no conflict of interest with the Applicant.
5.5.2.3	The assigned evaluator will begin the Document-based Evaluation based on the information sent by the Applicant, and when applicable, the information on objections. The Document-based Evaluation is limited to reviewing the following aspects: <ul style="list-style-type: none">a) That the certificates presented are valid and currently in effect.b) The sworn declaration of compliance with the Critical Criteria, with respect to the internal composition and organization of the Small Producers’ Organization (Sections 4.1 and 4.2 of the General Standard or its equivalent in the Specific Product Standards.c) Compliance of the Members’ List with the Critical Criteria in Section 4.1 of the General Standard or its equivalent in the Specific Products Criteria.
5.5.2.4	If necessary, the CE will request additional information from the Applicant.
5.5.2.5	Skip to point 5.75.6 in these procedures (“Final Evaluation Report”).
5.5.2.6	The process for the Shortened Document-Based Procedure can be summarized in the following steps and maximum timelines: <ul style="list-style-type: none">1. Documentation sent: 15 days

² It is possible to request the recognition for other Fair Trade Standards for this purpose



2. Complementary information sent: 15 days
3. Non-conformities addressed: 15 days

If a Small Producers' Organization that is applying for certification or registration **for the first time** does not comply with the total of the maximum timelines for each step in the certification process, the process will be considered to be discontinued and the applicant will have to send a new application to the CE (Certification Entity).

5.5.3 COMPLETE PROCEDURE "ON SITE"

5.5.3.1 The Certification Entity will ask the applicant to send in its Evaluation Form. The Evaluation Form is based on the General Standard of the Small Producers' Symbol and its purpose is for the Applicant to conduct a self-assessment. The Applicant will be informed that it must also use the spaces labeled with the heading "To be completed by the Applicant," and must also attach:

1. A list of members presented as follows:
 - a) Name(s) of producer(s)
 - b) Name of locality
 - c) Size of production unit, for each product to be certified
 - d) Annual production, for each product to be included in Certification
 - e) Must be validated internally or externally.
2. Certificates (Organic, Fair Trade, Sustainable, etc) that the applicant has been awarded and that are currently in effect.
3. Documents that support and confirm the data and responses indicated in the Evaluation Form, with regard to compliance with the Criteria in the General Standard, including:
 - a) Organization's Constitution
 - b) Minutes from the last two General Assemblies.
 - c) Appointments of directors and legal representatives
 - d) Description of internal control system, when applicable
 - i. Internal regulations
 - ii. Example of technical specifications
 - e) Forms or documents that demonstrate the system for traceability from the producers to the organization's clients
 - f) List of subcontracted entities that intervene in the processing and trading of products, when applicable.
4. Receipt for payment of the Offer

5.5.3.2 The applicant sends the Evaluation Form, correctly filled out and signed, with the requested attachments, as indicated in the instructions provided on the form.



5.5.3.3	<p>The Certification Entity receives and reviews the Evaluation Form to verify that it has been correctly filled out and signed, in accordance with the instructions provided on the form, and that the necessary annexes and confirmation of the corresponding payment have been included.</p> <p>If a document is missing or the form is not filled out correctly, the Certification Entity will notify the Applicant that the process will not move forward until all the documents requested have been received.</p>
5.5.3.4	<p>After it is confirmed that all documents have been received, the Certification Entity will assign an evaluator, taking care to assure that there is no conflict of interest with the Applicant.</p>
5.5.3.5	<p>Development of Evaluation Plan:</p> <ul style="list-style-type: none">a) The evaluator will review the information obtained from the Applicant and any objections from third parties received within the indicated time period, and will use the document entitled "Guidelines for defining the work days for evaluating compliance" together with Annexes 1 and 2 to develop an Evaluation Plan.b) The Evaluation Plan will define: the work plan, timelines and levels of evaluation in which the field evaluation will be conducted. It will also specify the list of documents that the Applicant must have available during the field evaluation, and the responsibilities to be fulfilled by the Applicant in attending to and accompanying the evaluator.c) The documents that the evaluator may ask the applicant to have available for the Field Evaluation may include:<ul style="list-style-type: none">1. A list of organizations or national and/or international networks in which the Small Producers' Organization is a member.2. Corrective measures of certifications, for example:<ul style="list-style-type: none">i. Fair Tradeii. Organic Productioniii. Sustainable Production3. Other documents that support compliance with the General Standard:<ul style="list-style-type: none">i. Most recent Annual Commercial Reportii. Valid General Working Planiii. List of specific projects4. History of the Small Producers' Organization (the year it was founded, institutional objectives, primary achievements, products, and suppliers of maquila or trading services).d) The Evaluation Plan will be sent to the Applicant.e) The Proposed Budget for the Service will be attached, and before the process will continue, the Applicant must send its approval and confirmation of its payment.f) An agreement will be reached regarding the days and times of the visit.
5.5.3.6	<p>Meeting for initiating On Site Evaluation:</p> <p>At the beginning of the On Site Evaluation, the Evaluator will minimally carry out the following steps:</p> <ul style="list-style-type: none">a) Introduce him/herself to the applicant's staff and representatives and define the contact person who will accompany him/her during the evaluation.b) Present the Evaluation Plan, clarify any doubts, make adjustments if necessary, and validate the Plan.



	<ul style="list-style-type: none">c) Present an overview of the methodology that will be used during the evaluation.d) Confirm the day and time of the closing meeting.e) Prepare a list of those in attendance.
5.5.3.7	<p>Compilation and evaluation of information:</p> <ul style="list-style-type: none">a) Evidence should be gathered through interviews, reviews of documents, and observations of activities and conditions in the areas involved. The entire process should be carried out in reference to the criteria to be evaluated, specifically the Critical Criteria, Minimum Criteria, and Continuous Improvement Criteria, as specified in the General Standard.b) Information gathered through interviews must be confirmed by other independent sources of information, such as: physical observations, measurements, records, etc.c) In the case of Monitoring Evaluations, it is necessary to review the implementation and effectiveness of improvement actions carried out by the Applicant in response to detected non-compliance.
5.5.3.8	<p>Development of Evaluation Findings:</p> <ul style="list-style-type: none">a) The evaluator must review all findings to determine which should be reported as Compliance and as Non-compliance. He/she must assure that all findings are documented in a clear, concise manner, and supported by objective evidence.b) All Compliance and Non-compliance will be documented on the Evaluation Form, will be made known and will be commented to the contact person.c) Cases of both Compliance and Non-compliance should be referenced to criteria, using the same Evaluation Form, in the spaces labeled with the heading: "To be completed by the Certification Entity's evaluator."
5.5.3.9	<p>Preparation of Evaluation Conclusions:</p> <p>Before the closing meeting, the evaluator must:</p> <ul style="list-style-type: none">a) Review the findings and any other relevant information that will be presented at the closing meeting.b) Prepare the cases of Compliance and Non-compliance, to be presented at the closing meeting.c) Prepare the Evaluation Report, to be presented at the closing meeting.
5.5.3.10	<p>Closing Meeting:</p> <ul style="list-style-type: none">a) The objective of the closing meeting is to present the evaluation findings and conclusions, in a manner in which they will be understood and acknowledged by the applicant.b) The cases of Non-compliance identified should be presented.c) During the meeting, the Applicant should be given the opportunity to make clarifications, and a debate should be avoided.d) At the end of the meeting, the conclusions obtained should be presented, and participants will be asked to sign the cases of Non-compliance presented to indicate their agreement.e) A list of those in attendance should be prepared.
5.5.3.11	<p>At the beginning of this document, there is a diagram of the process, with timelines for the various steps in the process that may be summarized as follows:</p> <ol style="list-style-type: none">1. Self-evaluation completed: 30 calendar days



<ul style="list-style-type: none">2. Complementary information sent: 30 calendar days3. Non-conformities addressed: 30 calendar daysd) If a Small Producers' Organization that is applying for certification for the first time does not comply with the total of the maximum timelines for each step in the certification process, the process will be considered to be discontinued and the applicant will have to send a new application to the CE (Certification Entity). Each step has a timeline of 30 days (total = 90 days).e) The time granted to the CE for conducting the evaluation for each step is a total of 15 calendar days, independent of the time that the evaluatee has for each step in the process. The time periods granted to the CE will never be considered within the timelines for SPPs.
5.5.3.12 Skip to point 5.7 5.6 in these procedures ("Final Evaluation Report").
5.6 FOLLOW-UP ON NON-COMPLIANCE
<ul style="list-style-type: none">a) If cases of Non-compliance are identified, the Applicant will have a maximum of 30 days from the date on which it was notified of these cases to present evidence that it has taken corrective actions to address them.b) The evaluator is responsible for reviewing the evidence sent by the Applicant to address cases of Non-compliance.
5.7 FINAL EVALUATION REPORT
<p>Using the information presented on the Evaluation Form and any corrective actions presented by the Applicant, the evaluator will prepare an Evaluation Report, to be presented to the Certification Entity.</p> <p>In the case of the Shortened Document-based Evaluation, a Shortened Evaluation Report will be prepared, considering only the information sent by the Applicant in response to the corresponding requirements.</p>
5.8 CERTIFICATION DECISION
<ul style="list-style-type: none">a) After the evaluator has presented the Evaluation Report with its corresponding attachments to the Certification Entity, the latter will turn it over to the Examination Committee.b) The Examination Committee will analyze, evaluate and make a decision on the basis of the Evaluation Report and its corresponding attachments, adhering closely to Examination Procedures.c) The Examination Committee will prepare and present the Resolution signed by the participants to the Director's Office of the Certification Entity.
5.9 POSITIVE NOTIFICATION FOR THE RESOLUTION
<ul style="list-style-type: none">a) The Certification Entity (CE) should send an email to notify the OPP evaluated that its resolution is positive, and should send a copy of SPP GLOBAL's Contract for Use of the Small Producers' Symbol, together with the corresponding annexes, and a form to confirm that these documents have been received, so that the OPP evaluated may sign them.b) The OPP evaluated should sign the contract, and send it to the CE, which will send it on to SPP GLOBAL.



- c) The signing of the User's Contract and its attachments currently in effect permits an Organization to use the Symbol after its certification has been granted.
- d) The SPOs that acquire their Small Producers' Symbol certificate for the first time should sign the User's Contract and a Confirmation Receipt confirming that it has been received.
- e) The SPOs that renew their certificate should not sign the User's Contract. Rather, when they pay their membership fee to SPP GLOBAL, this will be considered as ratification of their contract.

5.10 REQUEST FOR PAYMENT OF SPP GLOBAL MEMBERSHIP FEE

- a) When the CE presents an offer for certification, the offer should include the amount of the annual membership fee to be paid to SPP GLOBAL at the end of the evaluation process.
- b) If the resolution from the evaluation is positive, the CE should instruct the SPO evaluated to make the payment, once again indicating the amount to be paid to SPP GLOBAL and providing the necessary bank information for the deposit.

Note: If such payment is to be made in Mexico, the CE should remind the OPP evaluated to add the IVA tax to the fee, in line with the SPP's Regulations on Costs.

5.11 PAYMENT OF ANNUAL MEMBERSHIP FEE TO SPP GLOBAL

- a) The maximum official time period for paying the membership fee to SPP GLOBAL is established in the Regulations on Costs.
- b) In exceptional cases SPP GLOBAL may authorize the presentation of the certificate before such payment is made, if there is an agreement regarding such payment between the SPO evaluated and SPP GLOBAL.

5.12 GRANTING CERTIFICATION

- a) After the OPP has signed and sent the User's Contract and the form confirming that the document has been received, the Certification Entity may present the SPO with its Certificate.

NOTE: The Certificate can be granted even though the payment is not made immediately after the notification of the positive resolution.

- b) The CE's administrative office will use the Procedures for Issuance, Modification and Extension of Certificates and Registrations of Conformity, and will present the following documents to the SPO: the Applicant has made the necessary payment the Certification Entity must provide the client with the original copies of the following:
 - 1. Evaluation Report
 - 2. Resolution
 - 3. Certificate of the Small Producers' Symbol (on a form authorized by SPP GLOBAL)
 - 4. The User's Contract signed by SPP GLOBAL
- c) The Certification Entity must prepare a file on this service with a copy of all the documents mentioned above.

5.13 VALIDITY OF CERTIFICATION

- a) The Certificate is valid for one year plus a maximum of one month. (See Section 5.18 on the timeline for evaluations.
- b) A renewed certificate will be valid for one year beginning on the date of the previous renewal, independently of the date of the evaluation or the determination.



5.14 PUBLICATION OF CERTIFICATION
<ul style="list-style-type: none">a) After the evaluatee obtains the corresponding certification, the Certification Entity must maintain a directory with all organizations granted Certification. This directory must be available to anyone who requests it, through the means deemed necessary.b) The Certification Entity must immediately inform SPP GLOBAL when it has issued a Certification, sending the signed User's Contract and copies of the Resolution and Certificate. In a maximum period of 10 natural days.c) When SPP GLOBAL receives notification of new certifications, it will publish an updated list of certified organizations.d) Each time that an SPO acquires its 'Certificate' status or has regularized its certificate, SPP GLOBAL will notify the entire date base of SPOs.
5.15 NOTIFICATION OF NEGATIVE DECISION
<ul style="list-style-type: none">a) If the Resolution is negative, the Certification Entity must send a Letter of Notification to the evaluatee, and must return all original documentation within a period of 14 calendar days or less after the Resolution is presented.b) If the evaluatee does not agree with the Resolution, it may initiate an Appeal Process with the Certification Entity, following Dissent Procedures.
5.16 COMPLAINTS REGARDING THE CERTIFICATION ENTITY
In the case of a complaint regarding the Certification Entity, the Dissents Procedures of the Small Producers' Symbol will apply.
5.17 MONITORING EVALUATION
<p>If a need for corrective actions is addressed in the Resolution, the process will move to the Monitoring Evaluation.</p> <ul style="list-style-type: none">a) The monitoring evaluation must be carried out in a maximum period of 90 daysb) If the applicant does not agree with the monitoring evaluation, it can follow the Dissent Procedures.c) If the monitoring evaluation is not carried out in the stipulated time frame and in a correct manner, this matter will be turned over to the Examination Committee.
5.18 ANNUAL EVALUATIONS
<ul style="list-style-type: none">a) To assure that the applicant maintains the conditions under which the Certification was granted, the Certification Entity conducts Annual Evaluations.b) These annual evaluations are conducted every 12 months, with a grace period of one month before or after.c) The month before or after are intended for conducting the evaluation. It is possible that the Certificate will be presented later, in line with the table of maximum time periods for the proceduresd) A new completed application should be sent to the Certification Entity, using the current version of the application form. The Certification Entity will send the completed application to SPP GLOBAL when the evaluation is initiated.



- e) In exceptional cases, the Procedures for Issuance, Modification and Extension of Certificates and Registrations of Conformity will be followed.
- f) As part of the Annual Evaluations, the following should be reviewed:
 - i. That there is a User's Contract signed by SPP GLOBAL.
 - ii. The use of the Small Producers' Symbol, specifically: in order to use the Symbol, an organization must have a Certificate through which it can demonstrate compliance with the Symbol's General Standard.
 - iii. Compliance with the commercial criteria established in the General Standard, the list of specific Parameters, or the Specific Product Standards.
- g) In the case of complaints, it should be corroborated that timely attention has been given to them. When the previous procedure was a Document-based (Normal or Shortened) Procedure, the next one should be a Complete Procedure, including a Field Evaluation. If the previous procedure was a Complete Procedure, then a Document-based Procedure follows, but only if there are no specific reasons for applying a Complete Procedure, as in the case of dissents or the application of Risk Determination Procedures. The Shortened Document-based Procedure may only be applied in the case of an initial certification.

5.19 MAXIMUM TIMELINES FOR ANNUAL EVALUATIONS

- a) The SPO should have initiated—through the formal approval of a certification offer—the annual certification evaluation during the period between the month prior to and the month following the date that its certificate expires (see Section 5.19).
- b) If the SPO has not initiated the evaluation by one month following the expiration of its certificate, the CE should issue the certificate's suspension immediately after the month have ended (see Section 7.1).
- c) As soon as the evaluation has begun, the SPO must adhere to the maximum timelines indicated in the Diagram for the Certification Process (see Section II) which are as follows:
 - 1. Self-evaluation completed: 30 calendar days
 - 2. Complementary information sent: 30 calendar days
 - 3. Non-conformities addressed (when such exist): 30 calendar days
- d) If the evaluatee does not send the information corresponding to the first and second steps in a timely manner, it may send this information by the timeline established for the last step (compliance with any required Corrective Actions). In this case the evaluatee will have only 30 days to complete the three steps.
- e) If the evaluatee fails to send the necessary documentation, the CE should send reminders every 30 calendar days, requesting the information.
- f) The maximum amount of time for the CE to complete its evaluation for each step is 15 days, independent of the time granted to the evaluatee for each step of the process. The CE's timelines will not, in any case, be included within the time periods allowed for SPOs.
- g) If the evaluatee sends the information only one or two weeks before the end of the final 30-day period, the CE will not accept the information, since it will not be able to complete all the steps in the process in the remaining time. Thus, the certificate renewal process will be terminated, and the certificate or registration will be cancelled. If the SPO insists that it wishes to regularize its situation, it will have to send a substantiated request to SPP GLOBAL for an extension of the time period allowed for certification or registration.



- h) Based on the total number of days granted to the SPO to send information for all the steps in the process, plus the total number of days granted to the CE, the resolution on certification should be obtained within a maximum time period of 135 calendar days after the date on which the certificate expires. If notification of the resolution has not been made by the end of this time period, SPP GLOBAL will issue the immediate cancellation of the certificate. Any justification for any delay beyond the time period allowed must have been received by SPP GLOBAL within the established time period
- i) If the CE issues the suspension of the SPO's certificate, the time periods established in this section will once again begin. However, in the case of non-compliance with the maximum time period established, the certificate's cancellation will be issued in accordance with that established in section 7.2 of these Procedures.

5.20 CONTROL EVALUATIONS

- a) To assure the reliability of the Small Producers' Symbol system, Control Evaluations are conducted. The Certification Entity conducts random Control Evaluations based on the Risk Determination Procedures, with a proportional number of all certified Small Producers' Organizations. These evaluations are carried out through field visits to the organizations, which are not charged for the visits, since a portion of payments for the certification process is used to contribute to a fund for conducting these Control Evaluations.
- b) Control Evaluations should be conducted with about 10% of organizations certified through a Document-based Procedure and about 5% of organizations certified through a Complete Procedure.
- c) The Control Evaluations should be carried out less than one month after the selected Small Producers' Organizations are notified regarding the upcoming visit. The Certification Entity must inform the Small Producers' Organization of the date selected.
- d) The Control Evaluation should be aimed at corroborating the information from the last report prior to Certification, especially focusing on any corresponding corrective actions.

6. LIMITATIONS OF CERTIFICATION

6.1 TRANSFER OF CERTIFICATES FROM A 2ND LEVEL SPO TO A 1ST LEVEL SPO

In case of a 1st level SPO had separated itself from an 2nd level SPO, the CE must determine the applicable procedure, using the following criteria:

- a) The periods of the cycle of certification procedures must not exceed the maximum periods, including the time the 1st level SPP was part of the 2nd level SPO.
- b) The fact that the 1st level SPO was involved directly in SPP transactions of the previous SPO of 2nd level certified SPP, during the last year, previous to the application for the independent certification. Must be taken into account to establish the procedure to be applied.

6.2 IT IS NOT ALLOWED TO CERTIFIED 2ND LEVEL SPO WITHOUT INCLUDING ALL OF THE SPO OF FIRST LEVEL



In all cases, the criterion 1.16 of the General Standard, in which it is specified that the Standard must be applied for the entire organization whom desires the certification under its name, must be respected, as well as criterion 4.1.3 of the General Standard which states:

In the case of a second or third-level Small Producers' Organization seeking certification under this Standard, all of its members must be Small Producers' Organizations, as defined in this document, and for the purposes of this Standard, will be considered as part of the same organization.

Note: A Collective Certification Procedure to facilitate the certification for several 1st level SPO that are part of a 2nd level SPO, is being developed.

6.3 MENTION OF A 2ND LEVEL SPO IN THE CERTIFICATE

It is allowed that the CE issues the certificate of a 1st level SPO, mentioning the name (between parenthesis) of the 2nd level SPO to which the 1st level SPO belongs, as long as it does not create the impression that the 2nd level SPO is certified when it is not

6.4 DOUBLE SPP CERTIFICATION OF A 1ST LEVEL SPO

- a) A 1st level SPO cannot be certified independently if at the same time it is certified through a 2nd level SPO
- b) When a 2nd level SPO becomes certified, after one of its 1st level SPO becomes certified, the direct certification of the 1st level SPO will be suspended (because it is covered through the 2nd level SPO).

6.5 DOUBLE CERTIFICATION BY DIFFERENT CE PARALLEL

It is not allowed that a SPO is certified under the SPP program through more than one authorized Certification Entity

7. PROCEDURES FOR NON COMPLIANCE WITH REGULATORY FRAMEWORK

In this section in particular we understand the Regulatory Framework to be the set of regulatory documents in the SPP system, with the exception of the Code of Conduct.

When cases of a failure to comply with the Regulatory Framework (as specified here) are detected, the main entity responsible for the process in all cases is the authorized Certification Entity. The first step is Suspension, as established in Section 7.1, and if a Suspension is not lifted, the next step will be Cancellation, as established in Section 7.2

7.1 SUSPENSION

7.1.1 **Cause:** Failure to compliance with the Regulatory Framework



7.1.2 Consequences for suspended SPOs:

- i. Not allowed to enter into new SPP commercial contracts with certified or registered operators.
- ii. Required to comply with current SPP contracts already in force.
- iii. Will remain in SPP GLOBAL's public lists of SPP small producers' organizations with the status of 'Under Review.' It will be specified in a note that the 'Under Review' status signifies that it may be in any of the following sub-categories of status: Suspended, Expired Certificate, In Renewal Process, No Information Available.
- iv. The detailed status will be registered in the D-SPP (Digital information system) so that any SPO may verify the precise status, which may be the 'Suspended' status.
- v. In the case of a Small Producers' Organization, it will maintain the status of an organization signed up with SPP GLOBAL.³
- vi. Timelines for certification cycles in effect will not be interrupted. In other words, the timelines established in the most recent certificate for renewing such will remain in effect.

7.1.3 Lifting of Suspension:

- i. A Suspension will be lifted when the reasons for which this status was determined are declared to be resolved.
- ii. In addition if there are pending debts for unpaid certification, they must be paid.

7.1.4 Responsible Entity:

The Certification Entity (CE) is the entity responsible for carrying out the suspension of a certificate.

7.1.5 Suspension Procedures:

1. Prior to suspension, the CE will send notifications in a timely manner and on various occasions, regarding the reason(s) for which suspension will proceed, potentially including the following:
 - i. The need to renew the certificate in accordance with the period for which it is in effect.
 - ii. Non-compliance with any aspect of the Regulatory Framework.
2. The CE will notify the SPO or company that has been suspended, by way of an official communication and with a copy sent to SPP GLOBAL, specifying the reasons for which this decision was made. The SPO or company will be asked to confirm that it received such communication.
3. SPP GLOBAL will publish the new status acquired by the stakeholder on its web page within 24 work hours.
4. Following the notification sent by the CE, the SPO or company should resolve the reason(s) for the suspension and give basic information on the corresponding actions implemented to the CE.
5. The CE should apply the corresponding procedures for processing cases of non-compliance.

³ Certain details of consequences with regard to rights and obligations will be defined in the future in SPP GLOBAL's Internal Regulations.



6. The CE should notify SPP GLOBAL when the suspension has been lifted.
7. SPP GLOBAL will send a notification to the entire database of SPO stakeholders (SPOs and Final Buyers) to advise them that an SPO's certificate has been Suspended
8. The notification will include information regarding the consequences of the suspension, in the interest of transparency and discouraging negative practices.

7.2 CANCELLATION

7.2.1 Cause:

Not resolving the reasons for which a Small Producers' Organization or Company was suspended.

7.2.2 Consequences

- i. Not allowed to conduct new transactions in SPP conditions.
- ii. Required to comply with SPP contracts, as long as the following is respected: Products subject to contracts signed when the entity was still certified or registered may be sold in the market as SPP products for up to a year in the case of products on an annual cycle, up to six months in the case of biannual production, and up to three months in the case of products in ongoing production.
- iii. In the case of a Small Producers' Organization, it will maintain the status of an organization signed up with SPP GLOBAL during the period covered by payment of the previous enrollment fee.³

7.2.3 Lifting of Cancellation:

- i. The process should be reinitiated as an application for signing up as a new member. The Shortened Procedure will not apply.
- ii. The SPO or company must demonstrate that it resolved the causes for which its certificate was cancelled.
- iii. The minimum amount of time before applying for a new certificate is two years following the date of the notification of cancellation.

Any debt from unpaid fees corresponding to a previous certification must be paid

7.2.4 Responsible Entities:

- i. The CE is the entity responsible for carrying out the cancellation of a certificate.
- ii. SPP GLOBAL is responsible for cancelling the corresponding User's Contract.

7.2.5 Cancellation Procedures:

1. The CE issues a Cancellation decision when the indicated cases of non-compliance are not resolved within the time periods established, in accordance with the corresponding procedures.



2. The CE will notify the SPO or company that its certification has been cancelled by way of an official communication with a copy sent to SPP GLOBAL, explaining the reasons for which this decision was reached. When the notification is sent, it should ask the OPP or company to confirm that it was received.
3. SPP GLOBAL will eliminate the SPO from the official lists of SPP stakeholders.
4. SPP GLOBAL will send a notification to the entire database of SPP Stakeholders (SPOs and Final Buyers) to inform them that the SPO's certificate was Cancelled.
5. The notification will include information regarding the consequences of the cancellation, in the interest of transparency and discouraging negative practices. Example:
"SPOs and companies that have had their certification cancelled may not enter into new SPP contracts nor may they become certified during a two-year period."

8. PROCEDURES FOR NON COMPLIANCE WITH CODE OF CONDUCT

SPP GLOBAL's Procedures for Non-conformities will enter into operation if a failure to comply with the Code of Conduct is detected, or in the case of any non-compliance with the contract between the stakeholder and SPP GLOBAL, especially in the following cases:

- A. Use of the SPP logo in final products without having paid the corresponding user's fee to SPP GLOBAL.
- B. Use of the SPP logo by an SPO or company without having a current certification or registration in effect.
- C. Use of the SPP logo on products from small producers' organizations without a current certificate in effect.

8.1 Cause: Failure to comply with the SPP's Code of Conduct or failure to comply with the SPP User's Contract.

8.2 Procedures:

1. SPP GLOBAL is notified of a case of failure to comply with the Code of Conduct or User's Contract by a Certification Entity or from any other source.
2. SPP GLOBAL activates the Procedures for Non-Conformities.
3. In line with the Procedures for Non-Conformities, the Non-Conformities Committee will make a decision regarding each case, according to the information available and with support from SPP GLOBAL's operations team.
4. The resolutions reached by the Non-Conformities Committee may be, while not exclusively, the following:
 - a. Request complementary information from the SPO or company in question and/or SPP GLOBAL's internal bodies or third parties.
 - b. Determine a Suspension, in the terms of Section 7.1 of this procedure⁴ indicating the conditions necessary for lifting the Suspension.



- c. Determine a Cancellation, in the terms of Section 7.2 of this procedure⁴. A cancellation may be determined as a consequence of the failure to comply with the non-conformities indicated in the Suspension determination, or directly, in the case of infringements considered to be serious by the Non-Conformities Committee.
 - d. Make retroactive payment for use of the SPP and/or administrative expenses. (El pago retroactivo del uso del SPP y/o gastos administrativos.)
 - e. Formulate a legal claim for damages, demanding an award for damages. (Formular una demanda por daños y perjuicios, exigiendo reparación de daños.)
 - f. Remove products and materials from public places and distribution channels. (Retiro de productos y materiales de los espacios públicos y en canales de distribución.)
 - g. Notify that a legal claim will proceed. (Notificar que se procederá con una demanda legal.)
5. SPP GLOBAL will notify the SPO or company through a formal communication, with a copy sent to the corresponding CE, explaining the reasons for which the decision was reached, and requesting that the CE confirms it received the communication.
 6. In line with that established in Section 7 of this procedure, when a Suspension has been determined, SPP GLOBAL will publish the new status acquired by the SPO or company, and in the case of a Cancellation, SPP GLOBAL will remove the SPO or company from its official lists.
 7. In line with the Procedures for Non-Conformities, a decision by the Non-Conformities Committee may be appealed.

9. PROCEDURES FOR DESACTIVATION

When a voluntary deactivation has been requested, the main entity responsible for the processes to follow is SPP GLOBAL.

9.1 Cause: Lack of market and/or resources.

9.2 Conditions:

- i. The SPO or company must contact SPP GLOBAL to request that its certificate be deactivated at least 10 work days prior to the date when it expires.
- ii. It must be consistently current on payments for its annual enrollment with SPP GLOBAL, even when it does not conduct the certification process.

9.3 Consequences:

- i. Not allowed to enter into new SPP contracts.
- ii. Will remain on the SPP lists of SPOs and companies with an 'inactive' status for a maximum time period of 5 years.
- i. The way in which the inactive status affects or not the participation like Member of SPP GLOBAL, will be defined by the SPP GLOBAL's Internal Regulation.
- ii. Timelines in the certification cycles will be interrupted, or in other words, when the process is reinitiated, it will follow the procedures corresponding to the moment in the cycle when deactivation took place.



9.4 Reactivation:

When the renewal of a certification or is requested.

9.5 Cancellation:

If the conditions specified above are not met, SPP GLOBAL will proceed with the cancellation of the certificate in the terms specified in Section 7.2 of this procedure⁴.

9.6 Deactivation Procedures:

1. At least 10 work days prior to the expiration of a certificate, SPP GLOBAL will receive a request for deactivation from a small producers' organization, with an explanation of the causes.
2. If all the required conditions are met, SPP GLOBAL will approve the request from the organization, advising the latter of the amount to be paid to SPP GLOBAL corresponding to any unpaid fee, with a copy sent to the CE that carried out the last certification process.
3. The OPP must make a payment to SPP GLOBAL to cover the full amount of membership fee. SPP GLOBAL will inform the CE when such payment has been made, confirming the status of 'inactive.'
4. SPP GLOBAL will publish the new status of the organization in its official lists. If such status is cancelled due to failure to comply with the required conditions, SPP GLOBAL will remove the organization its lists.
5. The CE will notify SPP GLOBAL, in line with the normal procedures, when the inactive organization has reinitiated its certification process.

CHANGES MADE TO PREVIOUS VERSION DOCUMENT

Previous version of document:

Certification Procedures for Small Producer's Organizations
Small Producers' Symbol
Version 5. 15-Apr-2015
Edition 1. 10-Jun-2016
Translation 10-Jun-2016

⁴ With the difference that in this case SPP GLOBAL will be responsible for the process, instead of the OC.



	Change	Reason	Type of Change	Effective
1	Modality for annual certification for SPOs has been modified in Article 5.1.2. Even when SPP transactions have been few or none, Complete On-site Evaluations should be conducted two year after certification and then every three years after.	Provide greater reliability to the system.	Contents	10-March-2017
2	Specifications are included in 5.1.3, 5.1.4, 5.1.5 and 5.1.6 in reference to article 5.1.2.	Provide greater reliability to the system.	Contents	10-March-2017
3	In 5.6.2.1 the ESR-Ecocert Certificate has been added, as a recognized certificate for applying the Shortened Document-based Procedure for the first and only time.	Facilitating process to organizations that already have other certifications, to make joining SPP more accessible.	Contents	10-March-2017